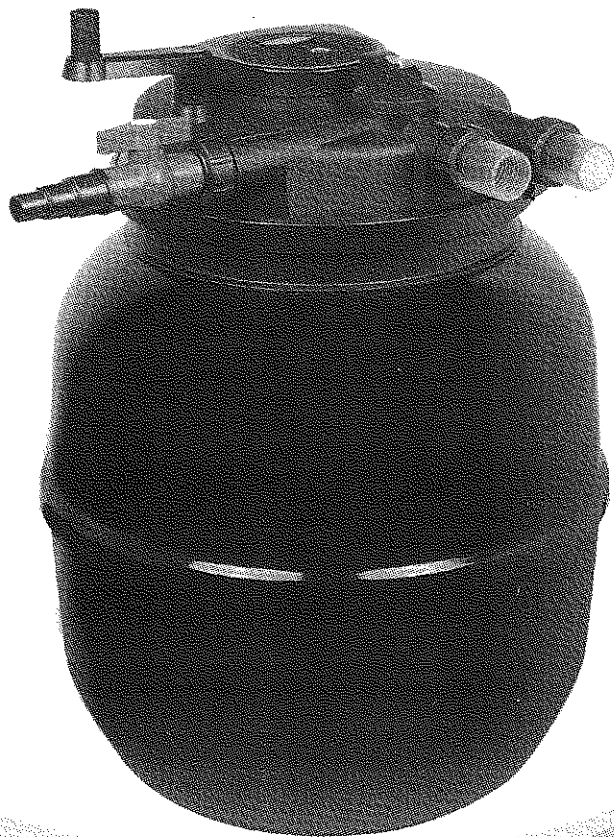

UV-C POND BIO PRESS FILTER

Instruction

CPF-50000



INSTRUCTION FOR USE

Use these instructions to familiarise yourself with the device before you use it for the first time. It is imperative that you observe the safety guidelines on the proper and safe use of this device. For safety reasons, children and young people under 16 years of age, as well as people who can not recognize potential hazards or who are not familiar with these instructions, must not use the device. Please keep these instructions in a safe place in the event of a change of ownership, please pass these instructions on to the new owner along with the product.

SYMBOLS

Water go through the pump into the filter.

Water go through the filter into the pond.

Water from the cleaning outlet go into the sewerage system or flower bed, etc.

UNPACKING

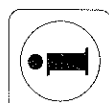
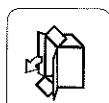
When unpacking, if external damage is visible which could impact the functioning of important parts of the equipment, please inform the carrier of the defects immediately, on the same day if possible, and insist on the facts being recorded in writing. Then contact your supplier who will take care of everything else.

APPROPRIATE

The pressure filter with integrated UV is sealed pressure filter system for biological and mechanical filtering of normal pond water with a temperature of +4°C to 35 °C. This pressure filter is exclusively intended for private use for cleaning garden ponds with or without pond fish. Never filter liquids other than water.

SAFETY GUIDELINES

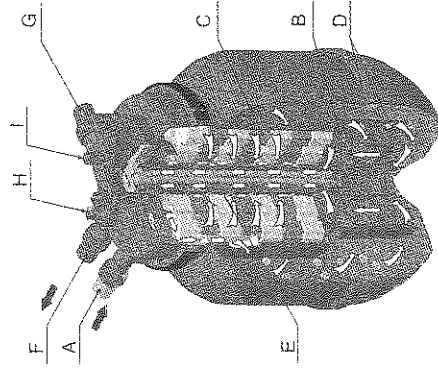
1. Electrical installation must be in accordance with the provisions of the domestic.
2. Extension cable and adapter (such as socket board) must be suitable for outdoor use (To prevent water splashing).
3. Make sure that the filter UV is equipment with a measured fault current not greater than 30mA via a fault current protection switch (FI or RCD).
4. Power supply connection section of the wire shall not be lower than with abbreviated symbol H05RN – F rubber cable.
5. If problems or difficulties, please seek help from electrical professionals.



with abbreviated symbol H05RN – F rubber cable.

5. If problems or difficulties, please seek help from electrical professionals
6. The electrical data of the supply must correspond to the data on the label.
7. Dangerous ultraviolet radiation, the rays from the UV lamp are harmful to your eyes and skin! Never operated the lamp outside the casing.
8. If the connecting cable, UV lamp or there is any breakage on the shell, may not run this product.
9. If someone in water, can not run this product.
10. In addition to the clear requirements on the manual, can not open the equipment or other accessories.
11. Before any operation on the equipment, should cut off all the power of the equipment.
12. Equipment, the interface and the plug is not waterproof, so do not allow the underwater laid or installation.
13. keep dry.
14. Need a pump to run this product. The maximum head of the pump shall not be longer than 0.6 bar (6 m head).
15. This product internal pressure shall not exceed 0.2 bar (function switch between red buoy up for internal Pressure is greater than 0.2 bar).
16. Hoses that connection the filter and pump must can withstand the pressure greater than 0.2 bar or the maximum head of the pump.
17. In the product normal work should ensure function switch to "filter". Only when cleaning, allows the switch to "clean".
18. Before starting up the filter, check the connected hoses, the clamp with safety latch are correctly.
19. If it is a frost day, you have to remove the filter.
20. Install the filter where it will not be exposed to direct sunlight.

HOW THE FILTER WORKS





过滤棉上的细孔形成一个较大的内表面，它是微生物的聚集之处。蓝色过滤棉的间隙较大，水流通过的速度快，有利于聚集微生物，它们能将铵通过硝化作用转变成硝酸盐。黄色过滤棉的间隙较小，水流通过的速度慢，有利于厌氧微生物的聚集，它们会降低硝酸盐，将之变成氮气（脱硝作用）。

E、UV杀菌

在UV杀菌灯的照射下，水中的病菌和细菌被杀死，水藻被裹成一团，从而抑制水藻的生长。

F、出水口

净化后的水通过压力软管或小溪等流回到花园池塘中。

G、污水出口

过滤器内部的污垢通过清洁，排出桶外，可用于施肥。

H、功能开关

用于在过滤功能和清洁功能之间的切换

I、手柄

在清洁功能开启后，通过摇动手柄来清洁过滤棉。

对净水的定义

在水深为1米的池塘里，能清楚的看见鱼或底部的石头，说明净水的目的以达到。

安装

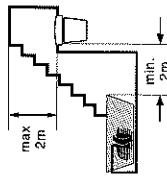
一、过滤器的安装

- 1、过滤器放置在不会被水淹没的地方，并确保过滤器不会掉落水中。安置地点应至少远离池塘边缘2米。
- 2、在池塘旁边挖一个洞，把过滤器埋入至紧固环以下。或将过滤器放置在一个结实平整的地方。
- 3、为了便于在过滤器上工作，安装好后确保桶盖能方便的打开。
- 4、抽水高度（出水口到池塘水的垂直高度）在1米以上的，需选择比配置表上更大一些的水泵。

二、装配软管接头

我们建议您用热水解热软管，将之推到阶梯软管接头上，并用一个软管夹夹住，由此提高接口的密封性能。

- 1、尽量选择口径大点的软管来连接过滤器。
- 2、对于长度至4米的软管应选用1"~1½"的管径，避免不必要的弯角和弧度。来避免造成大的流量损失。
- 3、为避免流量的损失，应根据软管的大小，在阶梯形的软管接头上的



will not fall into the pond, it should be placed at least 2 m from the edge of the pond.

- 2、 Dig a hole beside the pond, bedded filters below Clamp. Or put the filter in a strong smooth place.
- 3、 In order to facilitate work on filter, installed to ensure that the lid can open.

- 4、 Pumping height (the vertical height of the outlet to the pond water), more than 1m to choose a correspondingly more powerful pump.

Connecting hoses

we recommend warming the hose with hot water, pushing it onto the spiral stepped hose adapter and securing it with a hose clip. This makes the connection more watertight.

- 1、 Try to choose larger diameter hose to connect the filter.
- 2、 For hoses that are longer than 4 m, please always use hoses that correspond to the upper value of the scale.
- 3、 In order to avoid pressure loss, cut the spiral stepped hose adapter at the relevant points for each hose.

cleaning connection

Connected to the cleaning connection. This allows you to drain the dirty water directly into the sewerage system or onto a flower bed.

Starting on the pressure filter

Before each start-up, you should check that the connected hoses, the sealing cap and the clamp with safety latch are sitting correctly. the function switch must be set to the "filter" symbol. It is imperative that you read and follow the safety guidelines before start-up.

- 1、 Switch on the pump. Caution! The UV lamp must not be operated without water flowing it.
- 2、 Check all the sealing connection, if there is leaking, it should be adjusted.
- 3、 Pass filter on the power supply.
- 4、 The filter system with integrated UV must be running permanently, 24 hours a day.
- 5、 The UV lamp must be replaced after 8,000 hours of operation in order to ensure that the filter UV continues to operate with optimum effectiveness.
- 6、 The filter system must be cleaned regularly.

Attention: in the case of a new installation, the pressure filter only reaches its full biological cleaning effectiveness after a few weeks. Extensive bacterial activity only starts at temperature of +10 °C or above.

Washing the filter sponges

Suspended matter and dirt are deposited in the filter sponges over time. These deposits reduce the effectiveness of the filter, so the filter sponges should be cleaned regularly, e.g. Every week.

The filter sponges should be cleaned when cloudy or even dirty water flows out of the water outlet and back into the pond. (When the red indicators which in the handle function is float on.)

1. Turn clockwise until it clicks into the "clean" position.
2. Circumgyrate cleaning handle hard and several times. This squeezes the filter sponges and cleans them mechanically. Circumgyrate for deasil and at will achieve a better results.
3. The filter now will be rinsed. Once clean water could be seen through the transparent spiral stepped hose adapter at the cleaning connection, turn anticlockwise until it clicks into the "filter" position.
4. The filter is now operating again. Check the water flow into the pond.

Replacement of the filter sponges

If the water flow is too small due to dirty filter sponges and can not be improved through cleaning with the handle function. The filter sponges must be washed or replaced.

Please do not use any chemical cleaning agents so as not to kill off the microorganisms in the filter sponges.

1. Disconnect the mains plug of the filter.
2. Switch off the pump and ensure that it cannot be switched on unintentionally, remove all hoses by unscrewing the union nuts.
3. Remove protective buckle, then open the clamp.

4. Lift off the lid with the filter sponge assembly. Place the lid upside down on another clean surface. The filter sponges are lying with filter plat facing up.

5. Remove the diversion pipe anticlockwise, remove the screws on the gear and the separate plate.

6. Remove the filter sponges to replace or clean.

7. Pull off the filter sponges part and clean them under flowing water. Give the filter sponges a good squeeze.

8. Clean the container, filter sponges, O-ring and the edge of the container by spraying them with a water hose.

9. Put the sponge part as follow, put on the separate plate, fixed cleanness gear set, fasten the diversion pipe.

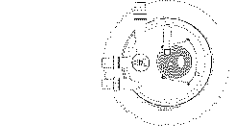
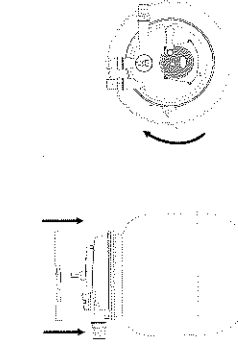
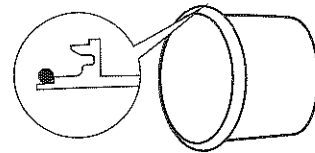
10. Place the O-ring 3 onto the upper edge of the container. (In order to easy to fit you should make it wet), press down on the lid.

11. Put the clamp on the right place. Push the safety latch in.

12. Fasten all hoses with flat seals or flow vane to the corresponding connection by screwing the union nuts on tight.

13. Start the pressure filter up again.

Attention: there is a channel connection between the container with the lid, so when installation, you need to aim before installation.



Cleaning the quartz tube and replace the UV lamp

1. Unscrew the four screw on the lid.
2. Pull out of the light head, then you can clean the quartz glass tube.
3. Clean the quartz glass tube with wet cloth.
4. Remove the fixing -nut on the quartz glass tube.
5. Pull out of the quartz glass tube then you can replace the UV lamp.
6. Check the quartz glass tube set, change it if broken.
7. Set up all part of the filter as before and start up the filter again.

Criteria: pond size and with /without fish population).

PUMP FLOW	6000L/h	8000L/h	10000L/h	12000L/h
CPF-50000	25m³	30m³	40m³	50m³
	50m³	60m³	80m³	100m³

TROUBLESHOOTING

FAULT	POSSIBLE REASON	MEASURES
Water not getting clear	<ol style="list-style-type: none"> 1. Unit not been used for long. 2. Inappropriate pump capacity. 3. water is extremely dirty. 4. Fish and animal population is too much. 5. Filter sponges are dirty. 6. Quartz glass tube is dirty. 	<ol style="list-style-type: none"> 1. Full effectiveness of biological cleaning is only reached after a few weeks. 2. Reset the power of the pump. 3. Remove algae and leaves from the pond, or change the water. Guideline: approx 1Kg fish to every 1000 cbm of pond water. 5. Clean the filter sponges. 6. Clean the quartz glass tube.
UV lamp indicator is not on	<ol style="list-style-type: none"> 1. Main plug of filter UV not connected. 2. Defective UV lamp. 3. Faulty connection. 4. The filter is overheating. 	<ol style="list-style-type: none"> 1. Connect the mains plug of the filter. 2. Replace the UV lamp. 3. Check the electrical connection. 4. UV switched on automatically after cooling down.

No water discharge from pond inlet

- 1、 Function switch set to "clean"
- 2、 Mains plug of the pump is not connected.
- 3、 Pond inlet blocked.

- 1、 Reset function switch to "filter"
- 2、 Connect the mains plug of the pump.
- 3、 Clean the inlet of pond.

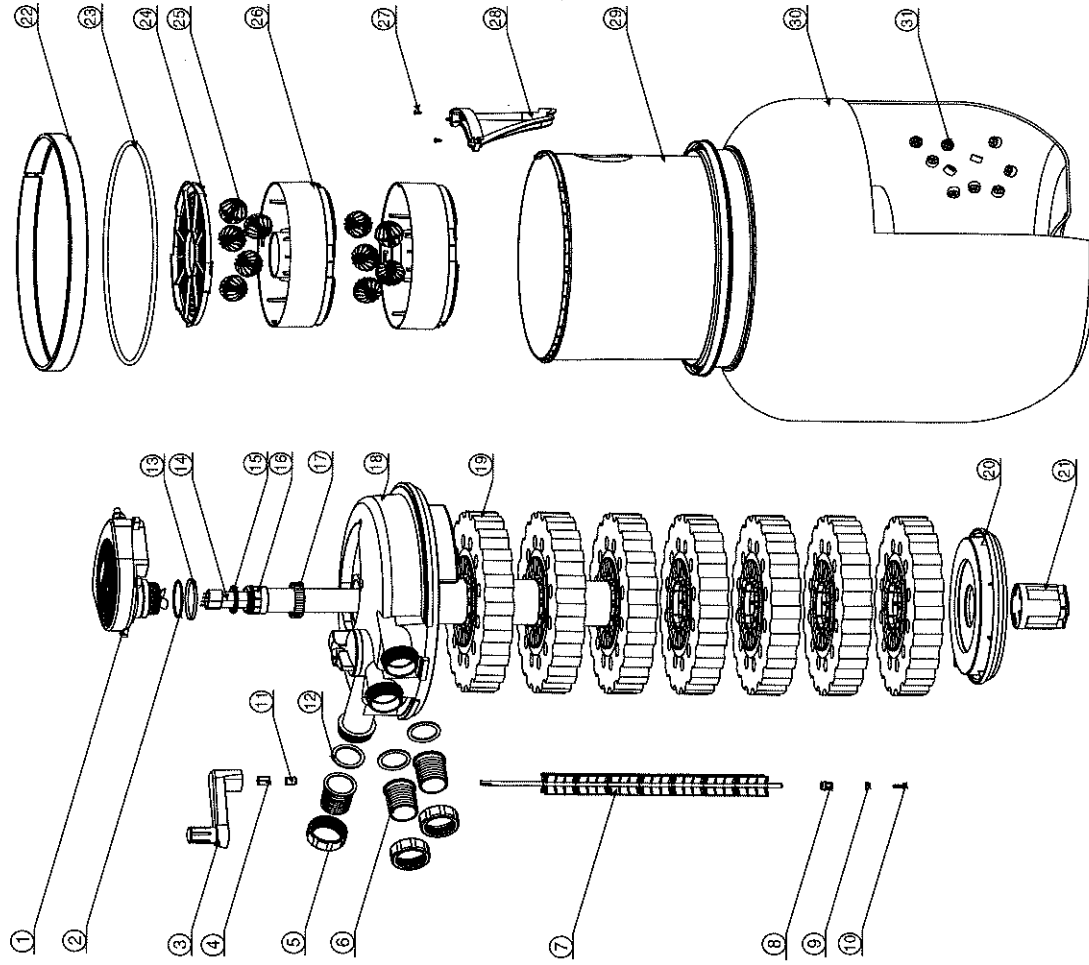
Wearing parts

- 1、 UV tube
- 2、 Filter sponges
- 3、 Seal set

Part list

No.	Name	No.	Name	No.	Name
1	UV head	12	Gasket	23	O-ring3
2	O-ring1	13	Sleeve	24	Filter basket cover
3	Cleaning handle	14	UV lamp	25	Bio-ball
4	Shaft connection	15	O-ring2	26	Filter basket
5	Inlet&outlet nut	16	Quartz glass tube set	27	Screw2
6	Inlet&outlet	17	Fixing-nut	28	Diversion plate
7	Clean gear set	18	Lid	29	Inner container
8	Down bearing	19	Sponge	30	Container
9	Washer	20	Separate plate	31	Bio-cell
10	Screw1	21	Diversion pipe		
11	Upper bearing	22	Clamp		

PART LIST



The Register Of Water Quality Test

Date	Temperature	Water color	Ph	CO ₃ ²⁻	Total hardness	NH ₃ /NH ₄	NO ₂ ⁻

Warranty Registration Form You Must Fill In All For Warranty Validation.

WARRANTY CARD

Model No.	Date of purchase		
User	Address		
Zipcode	Phone	Contact person	
Retailer			
Maintenance Records			

Y M D

Note: This warranty card is for further quality information from you and timely service from our company.

1. This card is to ensure quality service for product of our company.
2. The warranty term is 2 years, valid from the date of purchase filled on this card.
3. The lamp and other damageable parts are not in the time of guarantee.
4. The damage caused by incorrect use or the contrived will be exempted.

WARRANTY CARD (leaf For Retailer)

Model No	Date of purchase		
User	Address		
Zipcode	Phone	Contact person	
Retailer			

